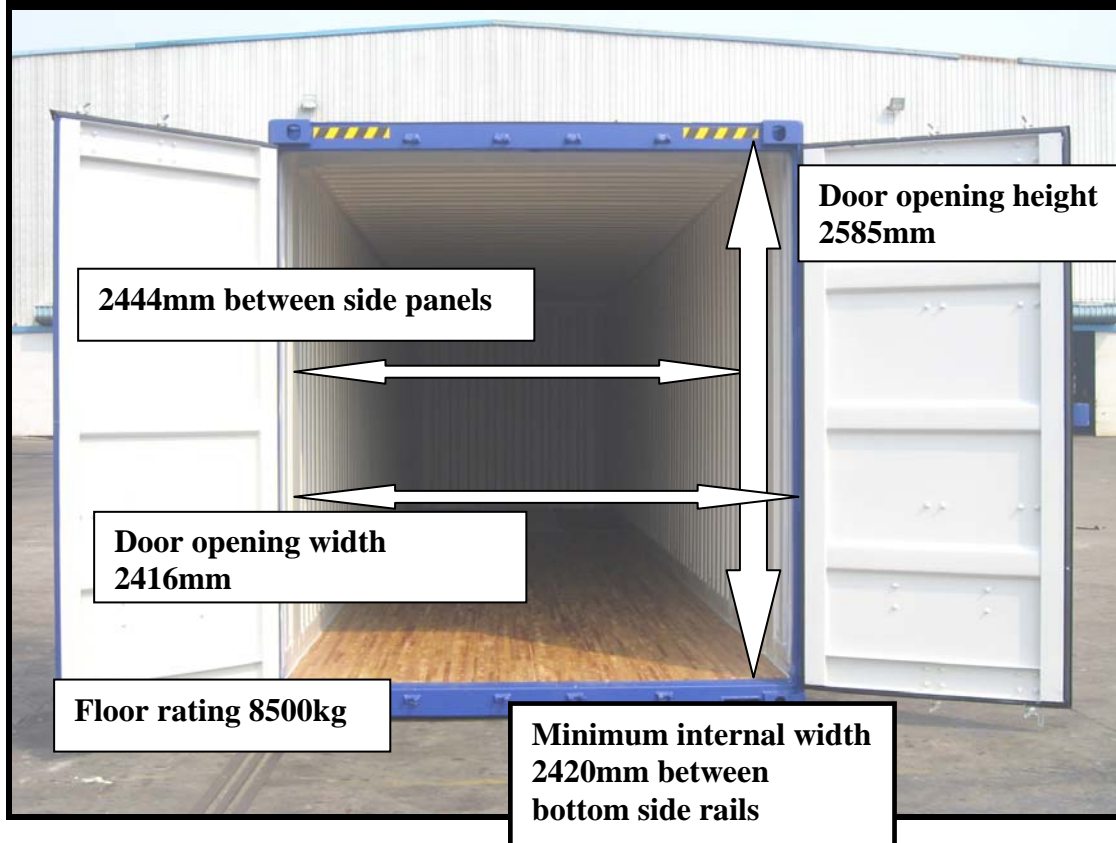
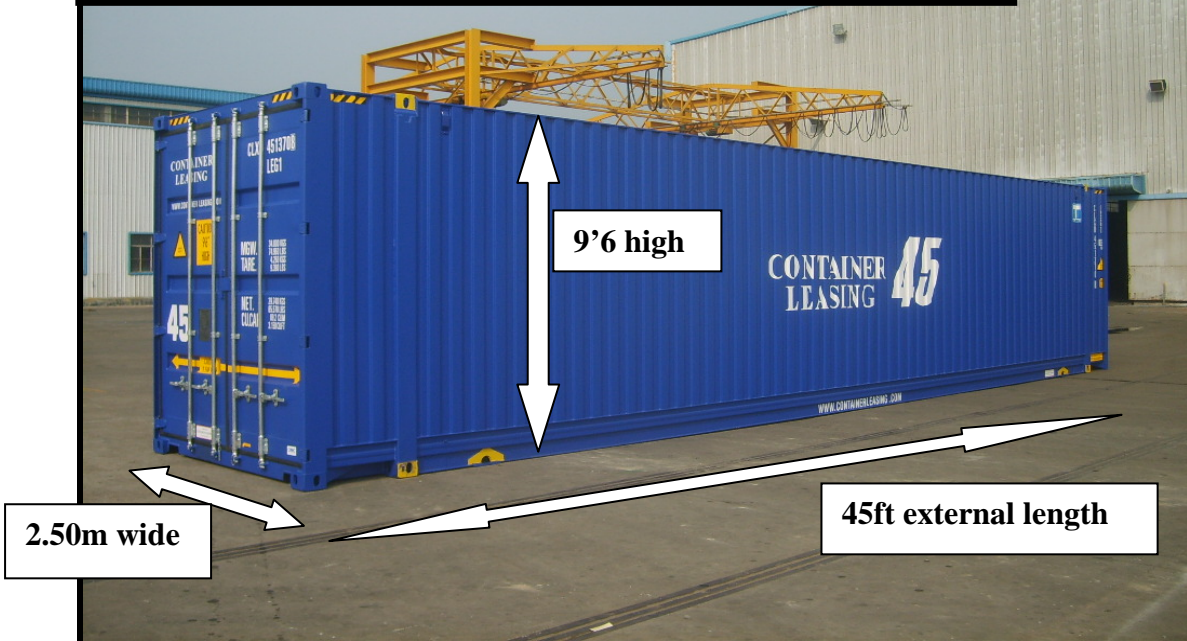


CONTAINER LEASING
45FT X 2.50M WIDE X 9'6 PALLET WIDE CONTAINER
Intermodal unit; road, rail, sea, barge. 33 Euro pallet
Patented

45' x 2.5m x 9'6
Tare; 4350kg
MGW; 34,000kg
Payload; 29,650kg

40ft top lift
7 high stacking at 45ft position - at 34,000kg
4 high stacking at 40ft position - at 34,000kg
Rail coded; S44 C44



Laminated birch floor. Plus lashing points inside.

**7 high stacking at 45ft position
4 high stacking at 40ft position
Both at 34,000kg**



**Extra roof protection
plates around top
castings**



Front end – chamfered Euro castings
Gooseneck tunnel



AUTOM
2.4M WIDE

CLXU 451992 2